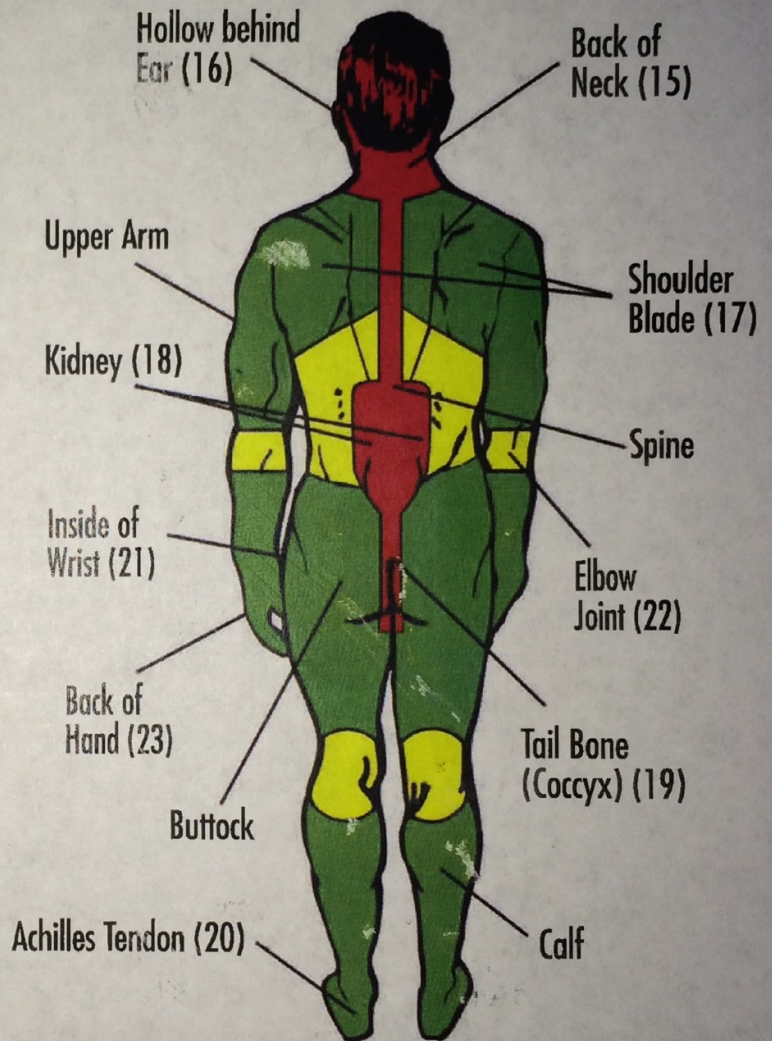
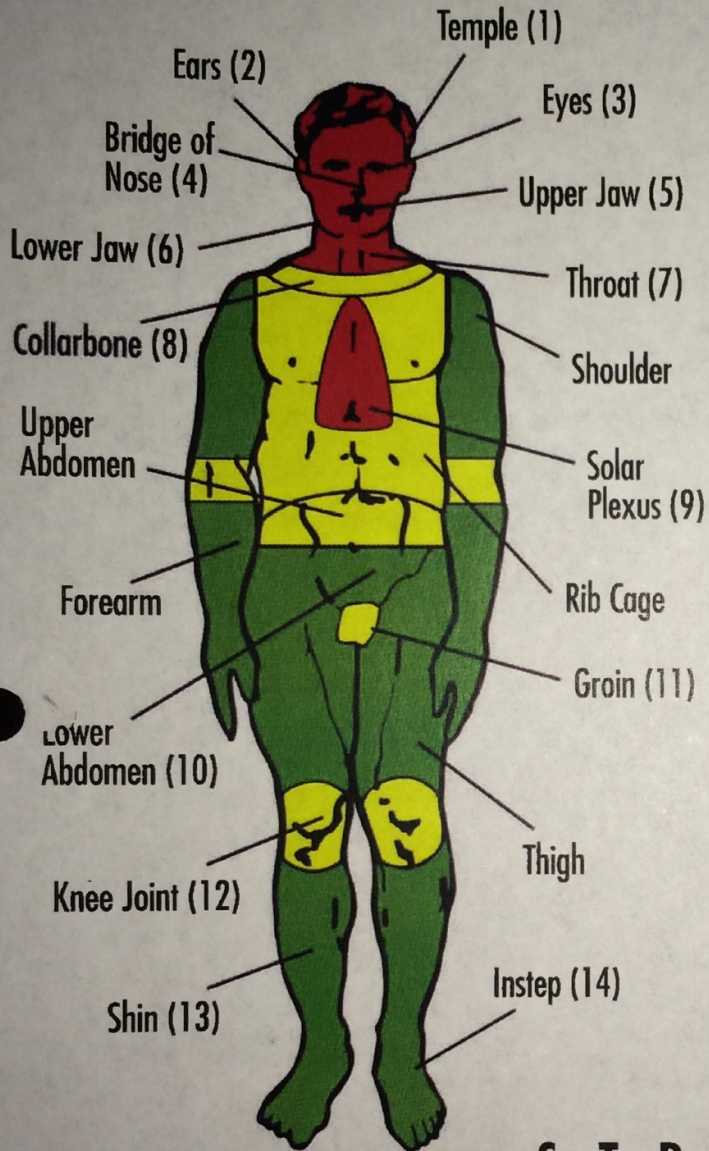


# BATON CHART

Escalation Of Trauma By Vital  
And Vulnerable Striking Areas



## S T R I K I N G

### GREEN TARGET AREAS

**REASONING:** Minimal level of resultant trauma. Injury tends to be temporary rather than long-lasting, however exceptions can occur.

Except for the HEAD, NECK, and SPINE, the whole body is a Green Target Area for the application of baton blocking and restraint skills.

### YELLOW TARGET AREAS

**REASONING:** Moderate to serious level of resultant trauma. Injury tends to be more long-lasting, but may also be temporary.

### RED TARGET AREAS

**REASONING:** Highest level of resultant trauma. Injury tends to range from serious to long-lasting rather than temporary and may include unconsciousness, serious bodily injury, shock or death.

# MONADNOCK BATON CHART

## INTRODUCTION

The use of force by officers is permissible when used to effect an arrest; to overcome resistance; to prevent escape; in self-defense; or in the defense of others. The force used must be objectively reasonable based on the facts and circumstances perceived and/or known by officers at the time the force is used. Officers should take into consideration: the severity of the crime involved; the actions of the subject and/or third parties; whether the subject poses an immediate threat to the safety of officers or others; and officer/subject factors. Officers' decisions are often made in circumstances that are stressful and rapidly evolving, thus officers are not required to determine the least intrusive measure of force that might resolve the situation. Officers are required to select an objectively reasonable option based on the perception of the risk and the actions of the subject and/or third parties at the time, as well as drawing upon their own training and experience.

When deciding on what specific force response to use, a balance between the force response chosen and the potential/foreseeable risk of injury to a subject are factors that should be considered in assessing the reasonableness of that use of force. When officers decide that a baton technique is an objectively reasonable option, they would then need to choose an appropriate target area. Target selection based on medical evaluations of the vulnerability of various parts of the human body and potential injury to subjects may assist officers in reducing injuries to subjects. In the "Monadnock Baton Chart," the potential trauma to the human body has been designated by colors denoting the level of risk

incurred by the application of physical force by means of the baton.

## BACKGROUND

The concept of Green, Yellow and Red Target Areas was developed to assist officers in assessing the probability of injury to subjects. When time allows, officers' use of force should take into consideration escalating and de-escalating options based on threat assessment, officer/subject factors and the probable severity of injury.

## THE CONCEPT IN ACTION

Green Target Areas are considered primary target areas when a baton technique such as a strike is chosen. Yellow Target Areas are considered an option when force applied to a Green Target fails to overcome resistance or does not correspond with the threat level. Yellow Targets are areas of the body where force is directed at a joint or an area in close proximity to a prominent Red Target Area and therefore the risk of injury increases. Red Target Areas are for confrontations where the subject is attempting to cause serious bodily injury or is applying deadly force to an officer or another; or situations where force to lower level target areas are ineffective based on an escalation of resistance presented by the subject during an attempt to end the confrontation. Physical force directed at Red Target Areas pose a greater risk of injury to the subject and in certain areas might constitute deadly force because of the probability of causing death.

## GENERAL POLICY

The Monadnock Police Training Council (hereafter "Council") would support an agency or instructor who finds it necessary to raise a specific target area to a higher color-code classification; for example, the collarbone from a Yellow to a Red Target Area. Any agency or instructor who elects to do so must clearly document that action. The Council would not support any change whereby a specific Target Area's color-code is lowered; for example, changing the collarbone from Yellow to a Green Target Area.

The Monadnock Baton Chart is an essential companion to the Monadnock Expandable Baton (MEB) and PR-24® Baton certification programs. Based on an agency's appropriate general order/policy directive regarding [baton] equipment approval for personnel, the following statements are valid. Monadnock's lines of AutoLock®, Classic Friction Lock, MX™, or SX™ expandable straight batons, as well as other brand name straight batons, are accepted under the MEB certification program. This program approval also extends to rigid (one-piece) plastic, aluminum or wood straight batons, as defined by the MEB program. Monadnock's lines of expandable/rigid PR-24® control batons (including the low-profile Control Device), as well as other brand name side-handle batons, are accepted under the PR-24® certification program.



126 NH Route 12 North • Fitzwilliam, NH 03447 U.S.A.  
(603) 585-6810 • (800) 258-5492 • FAX (603) 585-9575  
[WWW.TRAININGCOUNCIL.ORG](http://WWW.TRAININGCOUNCIL.ORG) • [WWW.BATONS.COM](http://WWW.BATONS.COM)